

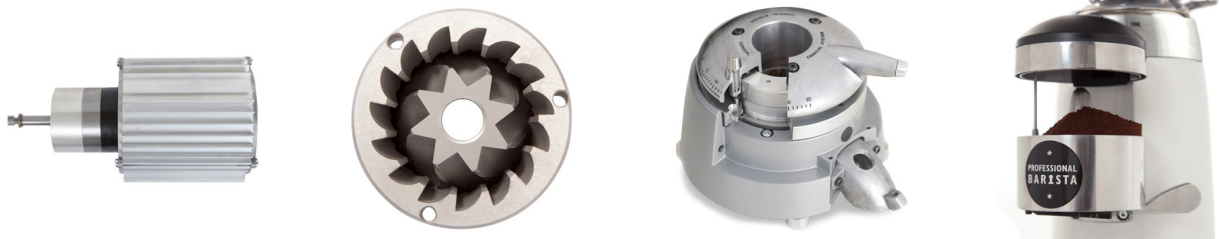
K10 Conic PB

BARISTA RULE

MOTOR 800 W
CONICAL BURRS Ø 68 MM

KEY SPECIFICATIONS

Motor output	800	W
Revolutions per minute	325	rpm
Ø Burrs	Conical 68	mm
Espresso point production	15	Kg/h
Hopper capacity	1,700	gr
Height x width x depth	635 x 215 x 400	mm
Net weight	16.93	Kg



KEY FEATURES

- ◆ “Parallel System” grind regulator lock
- ◆ Electronic fan
- ◆ Ergonomic doser lid for easy removal
- ◆ Special Barista doser without builtin tamper
- ◆ Aluminum star doser with high efficiency sweepers
- ◆ Full aluminum grinding collar adjustment and fork
- ◆ Aluminum portafilter rest
- ◆ High resistance power switch
- ◆ Illuminated on/off switch
- ◆ Auto-Stop

